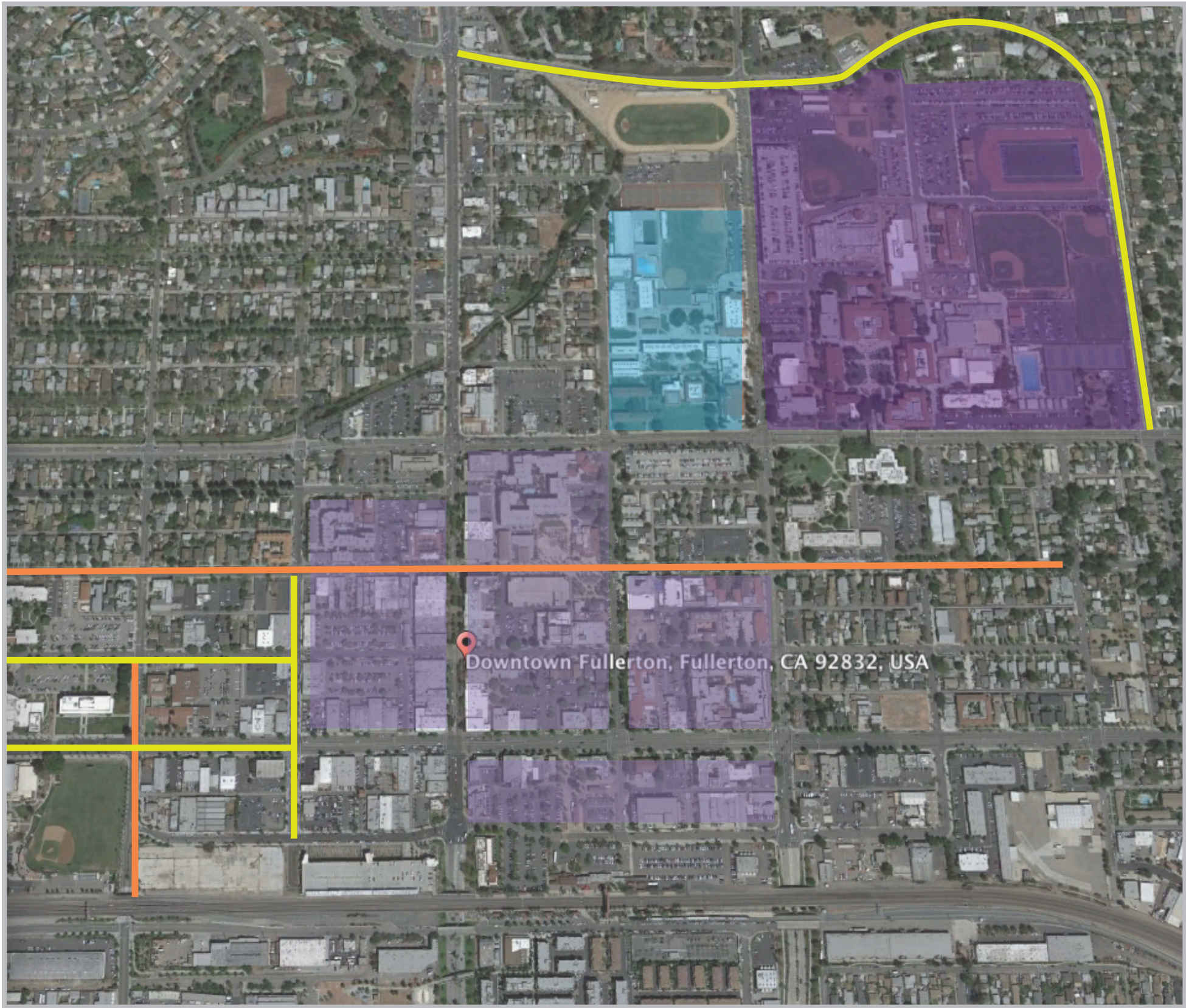


Activity Analysis Part 1| Bike Lanes



Fullerton College
Downtown Core
Fullerton High School

Type I Bike Lanes
Type II Bike Lanes
Type III Bike Lanes



Type I Bike Lanes
Type II Bike Lanes
Type III Bike Lanes

The amount of bike lanes in the downtown core is limited. There were a total of 2 Type III Bike Lanes in the area, 4 Type II Bike Lanes, and zero Type I Bike Lanes.

In Downtown two bikeshare stations were just installed. It is becoming imperative to address the issue of bike lanes, and just what types should be developed. Type 1, the most protected, with cyclists having their own seperated lane, would be ideal. However, type 2 bike lanes, with painted features, would be a great improvement from the single type 3, which has no painted features or barriers to protect the cyclists.

