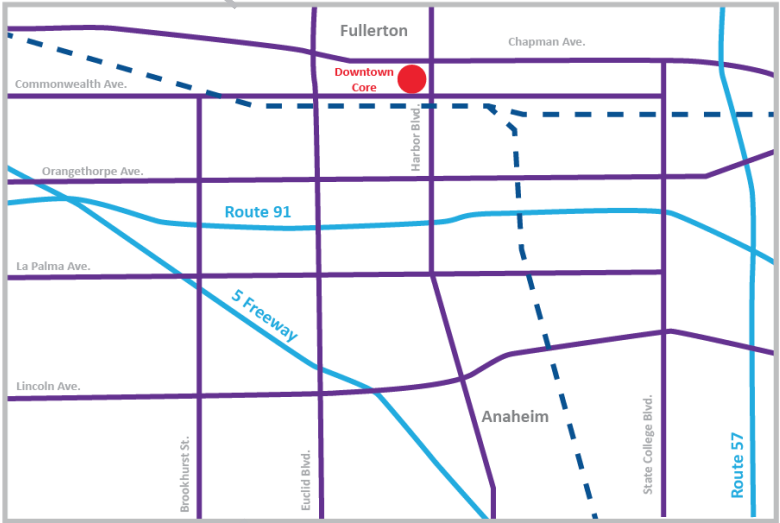
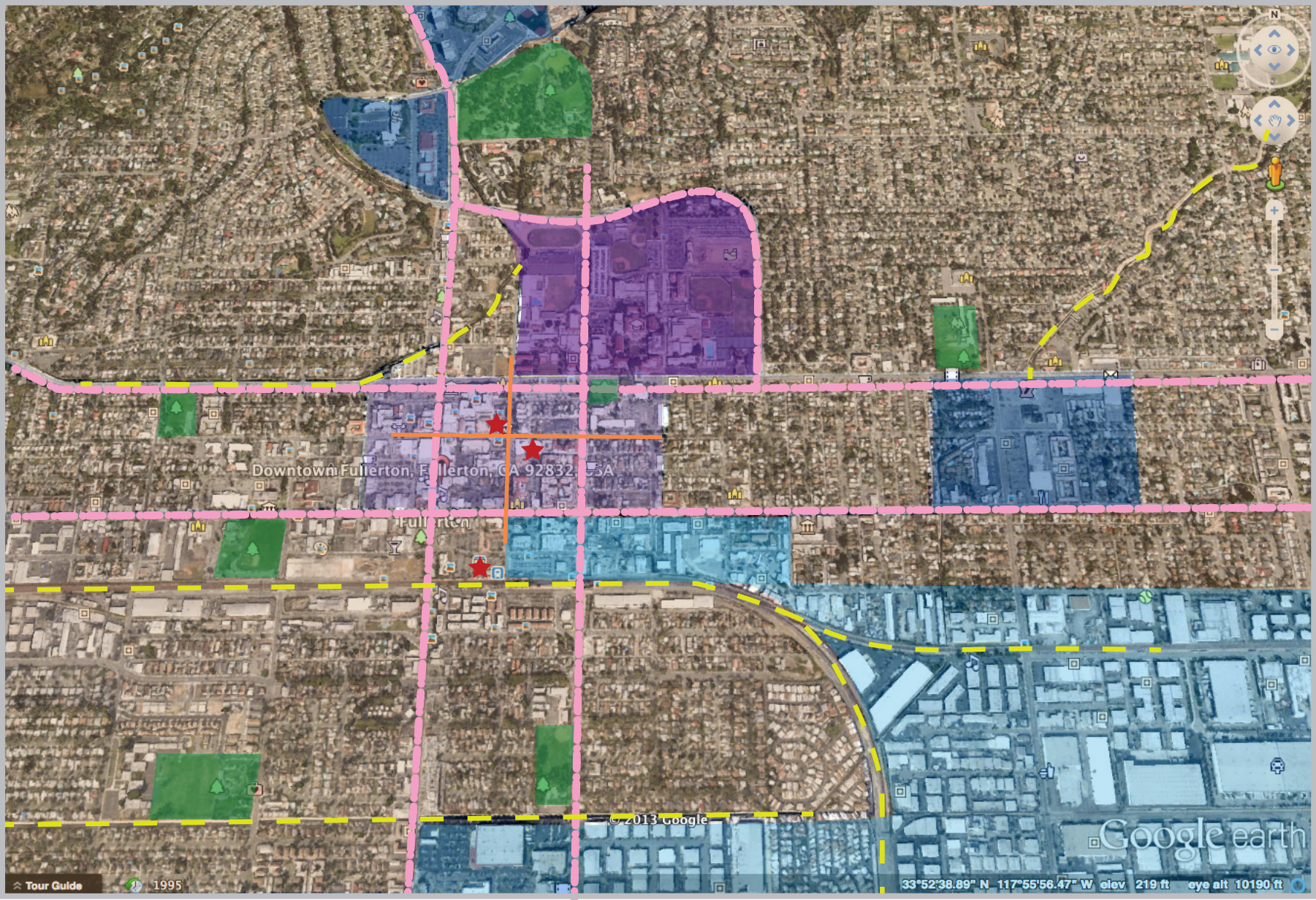


# Regional Analysis | Fullerton



- Large impediments to downtown access (heavy rail and canals)
- Main streets that should have Complete Streets
- Possible areas for signage
- Concentrated implementation of complete streets

- Residential region
- Industrial region
- Local Parks
- Downtown Core, mixed use area
- Fullerton College
- Commercial Region

